

StoCast Brick

Style Guide

Facade



Interiors



StoCast Bricks are thin, lightweight resin cast bricks for the decoration and protection of facades. They offer limitless design possibilities with a multitude of colors, textures and size options and can be used in Sto engineered wall cladding systems.





Table of Contents

1. Overview

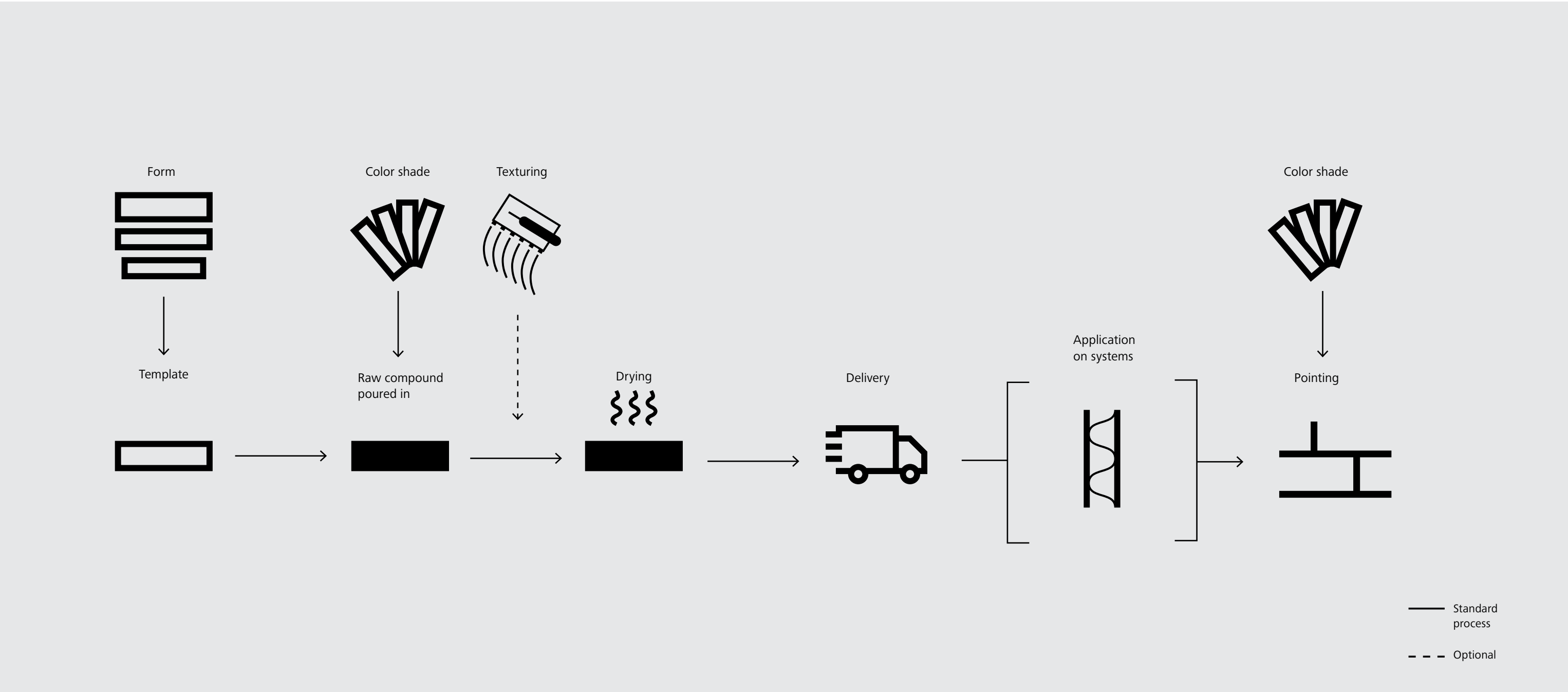
2. Brick Overview

3. Sto Bonding & Pointing Mortar

4. Project References



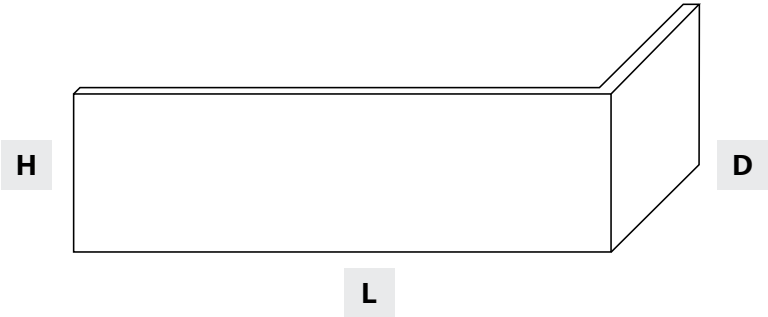
Manufacturing Process



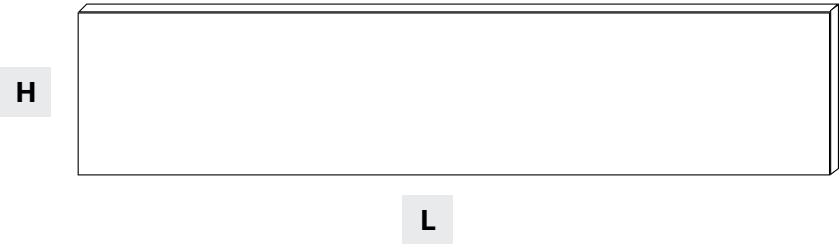


Brick Sizes & Shapes

	Corner			Flat Pieces		Lintels		
	Inches (in)			Inches		Inches		
Brick Type	D (depth)	H (height)	L (length)	H	L	D	H	L
Modular	3 5/8	2 1/4	7 5/8	2 1/4	7 5/8	3 5/8	3 5/8	11 5/8
King	2 3/4	2 5/8	9 5/8	2 5/8	9 5/8			
Queen	2 3/4	2 3/4	7 5/8	2 3/4	7 5/8			
Utility	3 5/8	3 5/8	11 5/8	3 5/8	11 5/8			
Estate	2 3/4	3 5/8	9 5/8	3 5/8	9 5/8			
Premier Plus	3 1/2	3 1/8	10 1/8	3 1/8	10 1/8			
Metric Norman	3 1/2	2 1/4	11 1/2	2 1/4	11 1/2			



Corner piece



Flat piece



Lintel Piece

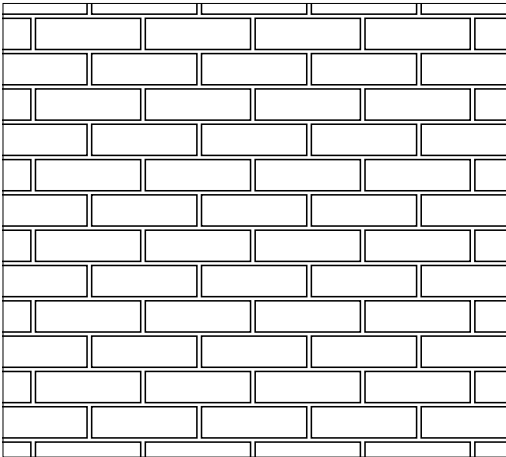
Please note that the details, illustrations, general technical information, and drawings contained in this guide are only general proposals and details which merely describe the basic functions schematically. They are not dimensionally accurate. Applicator/customer is independently responsible for determining the suitability and completeness for the product in question. Adjacent works are described only schematically. All specifications and information must be adjusted or agreed in the light of local conditions and do not constitute work, detail or installation plans. The specific technical specifications and information on the products contained in the Product Bulletins and details and specifications must be observed.



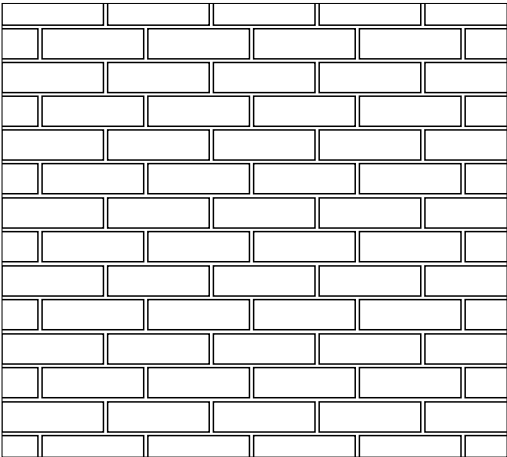
Brick Patterns

StoCast Brick can achieve the authetic look of brick in a wide range of color and texture options. They can be installed using the same patterns offered by the masonry industry and the same joint width. Here are examples of the most common brick patterns.

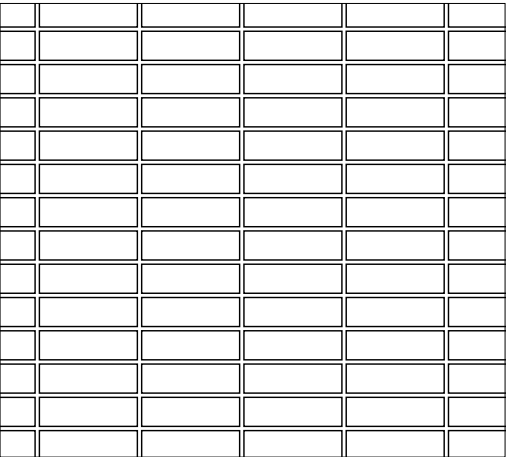
StoCast Brick sizes, as well as the width of the mortar joints, have a significant influence on the overall effect of the facade when choosing and/or developing the laying pattern for your project.



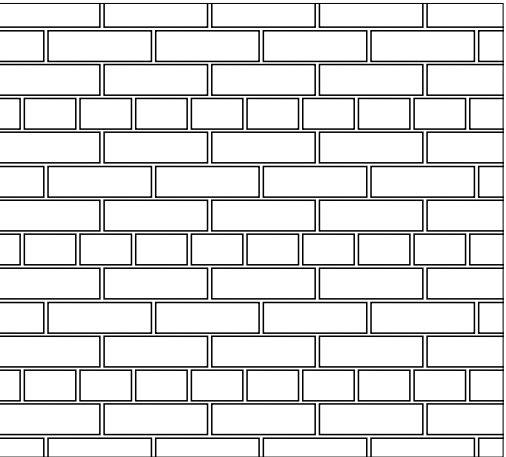
Running Bond



Stretcher Bond



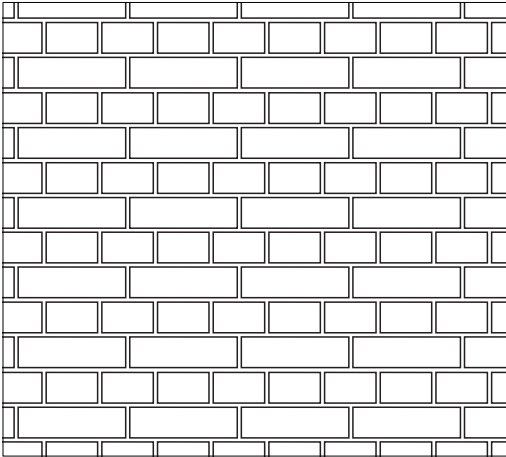
Stack Bond



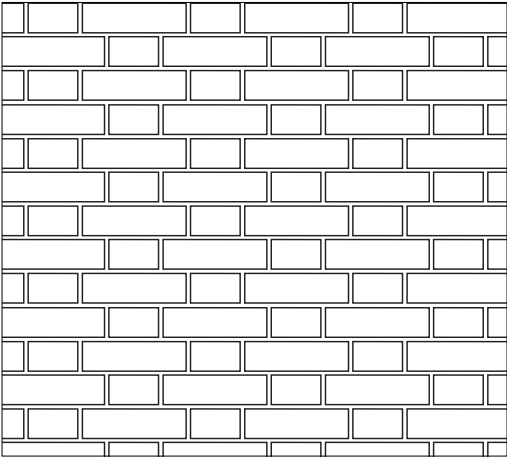
Common/American Bond



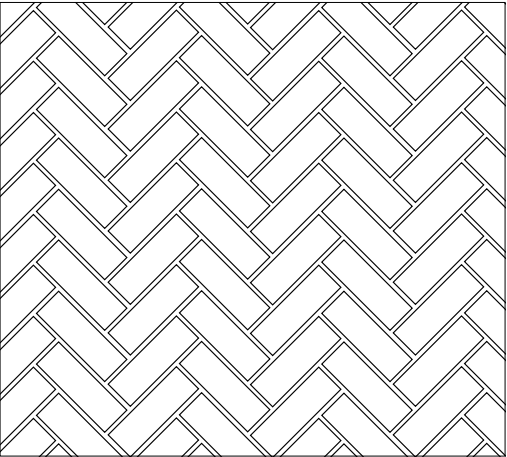
Check out our StoInspire app to visualize your design with project renderings using these same brick patterns.



English Bond



Flemish Bond



Herringbone 45 degree

Installation recommendations

Mortar joints

Mortar joints have a high impact on the appearance of the facade. We offer 9 standard colors to provide design flexibility. Please refer to our website or request our Sto Bonding and Pointing Mortar grout kit. Maximum width of grout joints: 3/4 inch (19mm).

Brick Patterns

StoCast Brick mimics the look of brick. They can generally be installed using the same patterns offered by the masonry industry. Complex patterns increase the difficulty of the application. In order to achieve the best color result, make sure to pick shapes from different boxes. This also applies to monochromatic shapes. We recommend a mock-up be constructed for approval in an inconspicuous area to be used as a reference. Precisely planning the layout for the pattern is a prerequisite. In the case of complex patterns, we recommended laying out the elements on a horizontal surface in accordance with the specified pattern / installation plan before application. If possible, start work on a wall that is not directly visible, as the application process can be optimized during the course of the work.

Preliminary work

Details, such as termination at grade, connections to adjacent building elements (window/door frame, window sill, roof, sheet metal, etc.), structural expansion joints must be planned in advance and coordinated between the relevant parties. The application instructions of Sto are to be observed. Refer to the applicable Sto System specifications and details.

Hand-held samples and sample surface areas

Smaller samples are not always suitable for providing an overall impression of an application technique on larger facade surfaces. For this reason, we highly recommend having the contractor prepare a mock up sample. If this work requires scaffolding, this should be taken into account when creating the sample. The finished sample area should be inspected and accepted by the site manager/building owner. The area provides a reference surface for the contracted service.

Size of the area

For large facades, we recommend dividing the surface to be created into smaller partial areas. This simplifies calculations and execution for best application results.

Scaffolding

The scaffolding must be appropriate for the trade processes being carried out and the techniques and tools used: take into account the spacing, the brackets and the positioning and height of the scaffolding.

Weather protection

If the weather is unfavorable during the application and drying processes, it is necessary to put in place appropriate protective measures (rain/solar protection, etc.).

Corner areas/connections

Carefully plan connections and corner areas. It may be necessary to use a different application technique in these areas.

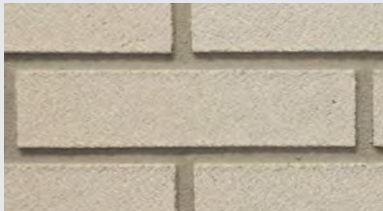





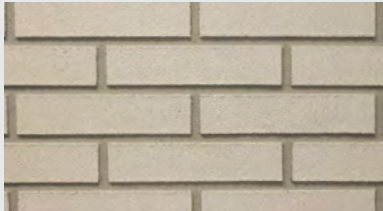





Limitations

- Minimum radius: 4-3/4 inches (120 mm).
- Use only when surface and ambient temperatures are above 50 to 85°F (5-30°C) during application and drying period.
- Do not use on horizontal or below grade surfaces, projecting ledges, sills, or sloped surfaces, or where immersion in water may occur.
- Do not use on roof or roof-like surfaces.
- Select colors with Light Reflectance Value (LRV) greater than or equal to 20 when used over StoTherm ci system. No LRV restrictions when used over StoTherm ci Mineral system.
- Not recommended to clean with abrasive or high pressure wash methods. Use low pressure (up to 500 psi [3.45 MPa]).

Cleaning, repair and maintenance

Refer to the StoCast Brick Repair and Maintenance Guide.

Brick overview

	Brushed/Sand Faced	Light Texture	Tumbled	Vertical/Blade Cut	Rolled	Heavy Texture
Detail section						
Product detail						
Surface	Sanded, finely textured brick	Light wirecut texture, with small indentations	Distressed, aged and irregular in shape	Extruded and scored texture	Wavy textured brick	Hard, rough texture
Edges / corners	Rounded or sharp	Rounded or sharp	Rounded	Rounded	Rounded	Rounded or sharp

Brushed/Sand Faced Bricks

Surface
Sanded, finely textured brick



Albi - S9.4936



Bordeaux - S9.5317



Brighton - S9.4748



Durham - S9.4824



Leiria - S9.7227



Mayfield - S9.5895



Milwaukee - S9.5974



Princeton - S9.8419



Richmond - S9.6526



Salem - S9.6597



Savannah - S9.7341



St. Louis - S9.5287



Toulouse - S9.6689



Wexford - S9.4865

Albi S9.4936

Light Reflective Value [LRV]:
13

Brick Corner:
Rounded

Mortar Joint color:
Brown Grey 2063



Please note that the details, illustrations, general technical information, and drawings contained in this guide are only general proposals and details which merely describe the basic functions schematically. They are not dimensionally accurate. Applicator/customer is independently responsible for determining the suitability and completeness for the product in question. Adjacent works are described only schematically. All specifications and information must be adjusted or agreed in the light of local conditions and do not constitute work, detail or installation plans. The specific technical specifications and information on the products contained in the Product Bulletins and details and specifications must be observed.

Bordeaux S9.5317

Light Reflective Value [LRV]:
10

Brick Corner:
Rounded

Mortar Joint color:
Brown Grey 2063



Please note that the details, illustrations, general technical information, and drawings contained in this guide are only general proposals and details which merely describe the basic functions schematically. They are not dimensionally accurate. Applicator/customer is independently responsible for determining the suitability and completeness for the product in question. Adjacent works are described only schematically. All specifications and information must be adjusted or agreed in the light of local conditions and do not constitute work, detail or installation plans. The specific technical specifications and information on the products contained in the Product Bulletins and details and specifications must be observed.



Brighton S9.4748

Light Reflective Value [LRV]:
12

Brick Corner:
Sharp

Mortar Joint color:
Graphite 2061



Please note that the details, illustrations, general technical information, and drawings contained in this guide are only general proposals and details which merely describe the basic functions schematically. They are not dimensionally accurate. Applicator/customer is independently responsible for determining the suitability and completeness for the product in question. Adjacent works are described only schematically. All specifications and information must be adjusted or agreed in the light of local conditions and do not constitute work, detail or installation plans. The specific technical specifications and information on the products contained in the Product Bulletins and details and specifications must be observed.

Durham S9.4824

Light Reflective Value [LRV]:
10

Brick Corner:
Rounded

Mortar Joint color:
Grey 2060



Please note that the details, illustrations, general technical information, and drawings contained in this guide are only general proposals and details which merely describe the basic functions schematically. They are not dimensionally accurate. Applicator/customer is independently responsible for determining the suitability and completeness for the product in question. Adjacent works are described only schematically. All specifications and information must be adjusted or agreed in the light of local conditions and do not constitute work, detail or installation plans. The specific technical specifications and information on the products contained in the Product Bulletins and details and specifications must be observed.



Leiria S9.7227

Light Reflective Value [LRV]:
11

Brick Corner:
Sharp

Mortar Joint color:
Grey 2060



Mayfield S9.5895

Light Reflective Value [LRV]:
90

Brick Corner:
Rounded

Mortar Joint color:
Grey 2060



Please note that the details, illustrations, general technical information, and drawings contained in this guide are only general proposals and details which merely describe the basic functions schematically. They are not dimensionally accurate. Applicator/customer is independently responsible for determining the suitability and completeness for the product in question. Adjacent works are described only schematically. All specifications and information must be adjusted or agreed in the light of local conditions and do not constitute work, detail or installation plans. The specific technical specifications and information on the products contained in the Product Bulletins and details and specifications must be observed.

Milwaukee S9.5974

Light Reflective Value [LRV]:
85

Brick Corner:
Sharp

Mortar Joint color:
Light Grey 2059



Please note that the details, illustrations, general technical information, and drawings contained in this guide are only general proposals and details which merely describe the basic functions schematically. They are not dimensionally accurate. Applicator/customer is independently responsible for determining the suitability and completeness for the product in question. Adjacent works are described only schematically. All specifications and information must be adjusted or agreed in the light of local conditions and do not constitute work, detail or installation plans. The specific technical specifications and information on the products contained in the Product Bulletins and details and specifications must be observed.

Princeton S9.8419

Light Reflective Value [LRV]:
11

Brick Corner:
Rounded

Mortar Joint color:
Grey 2060



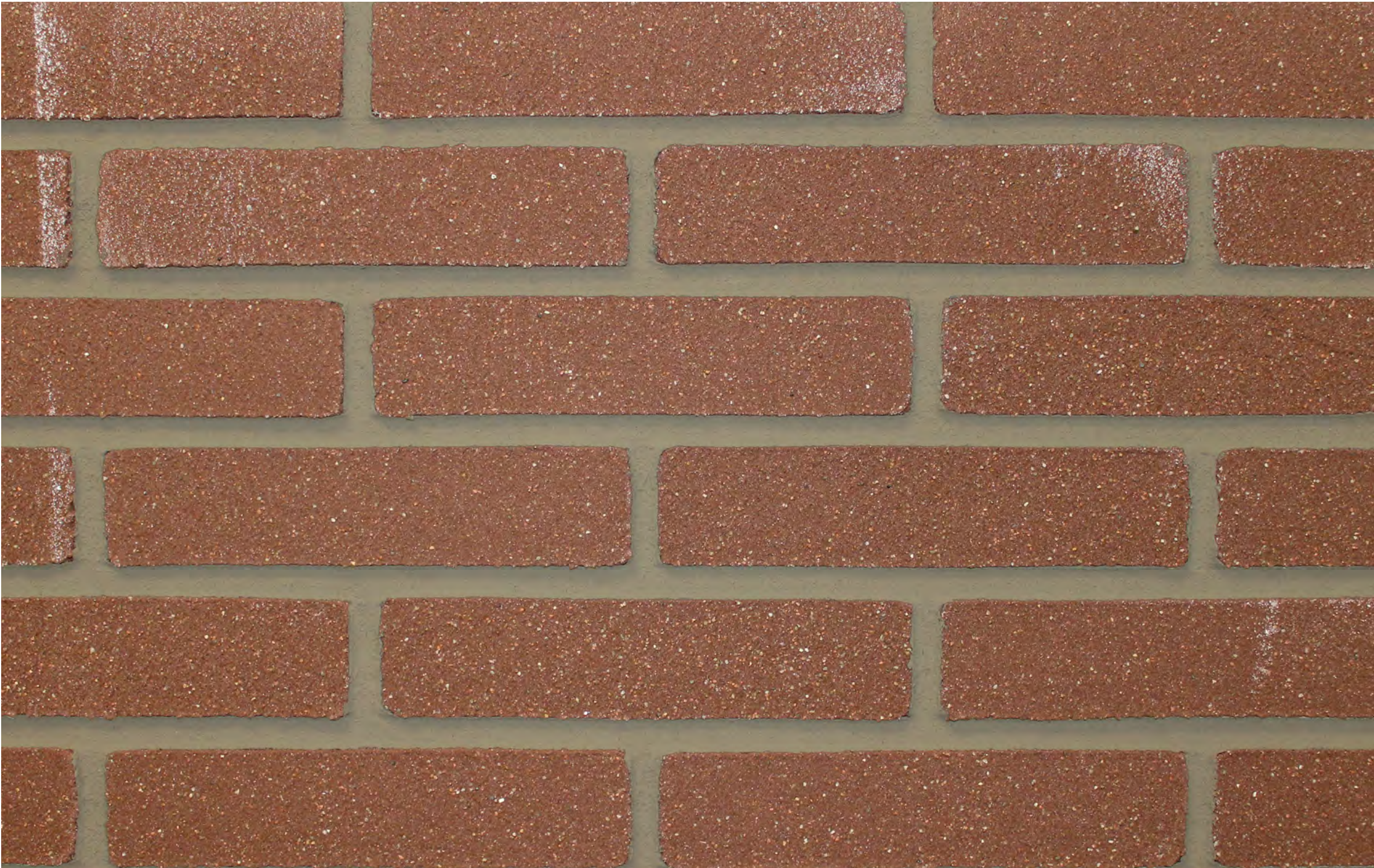
Please note that the details, illustrations, general technical information, and drawings contained in this guide are only general proposals and details which merely describe the basic functions schematically. They are not dimensionally accurate. Applicator/customer is independently responsible for determining the suitability and completeness for the product in question. Adjacent works are described only schematically. All specifications and information must be adjusted or agreed in the light of local conditions and do not constitute work, detail or installation plans. The specific technical specifications and information on the products contained in the Product Bulletins and details and specifications must be observed.

Richmond S9.6526

Light Reflective Value [LRV]:
10

Brick Corner:
Rounded

Mortar joint color:
Cement Grey 2058



Please note that the details, illustrations, general technical information, and drawings contained in this guide are only general proposals and details which merely describe the basic functions schematically. They are not dimensionally accurate. Applicator/customer is independently responsible for determining the suitability and completeness for the product in question. Adjacent works are described only schematically. All specifications and information must be adjusted or agreed in the light of local conditions and do not constitute work, detail or installation plans. The specific technical specifications and information on the products contained in the Product Bulletins and details and specifications must be observed.

Salem S9.6597

Light Reflective Value [LRV]:
11

Brick Corner:
Sharp

Mortar Joint color:
Anthracite 2057



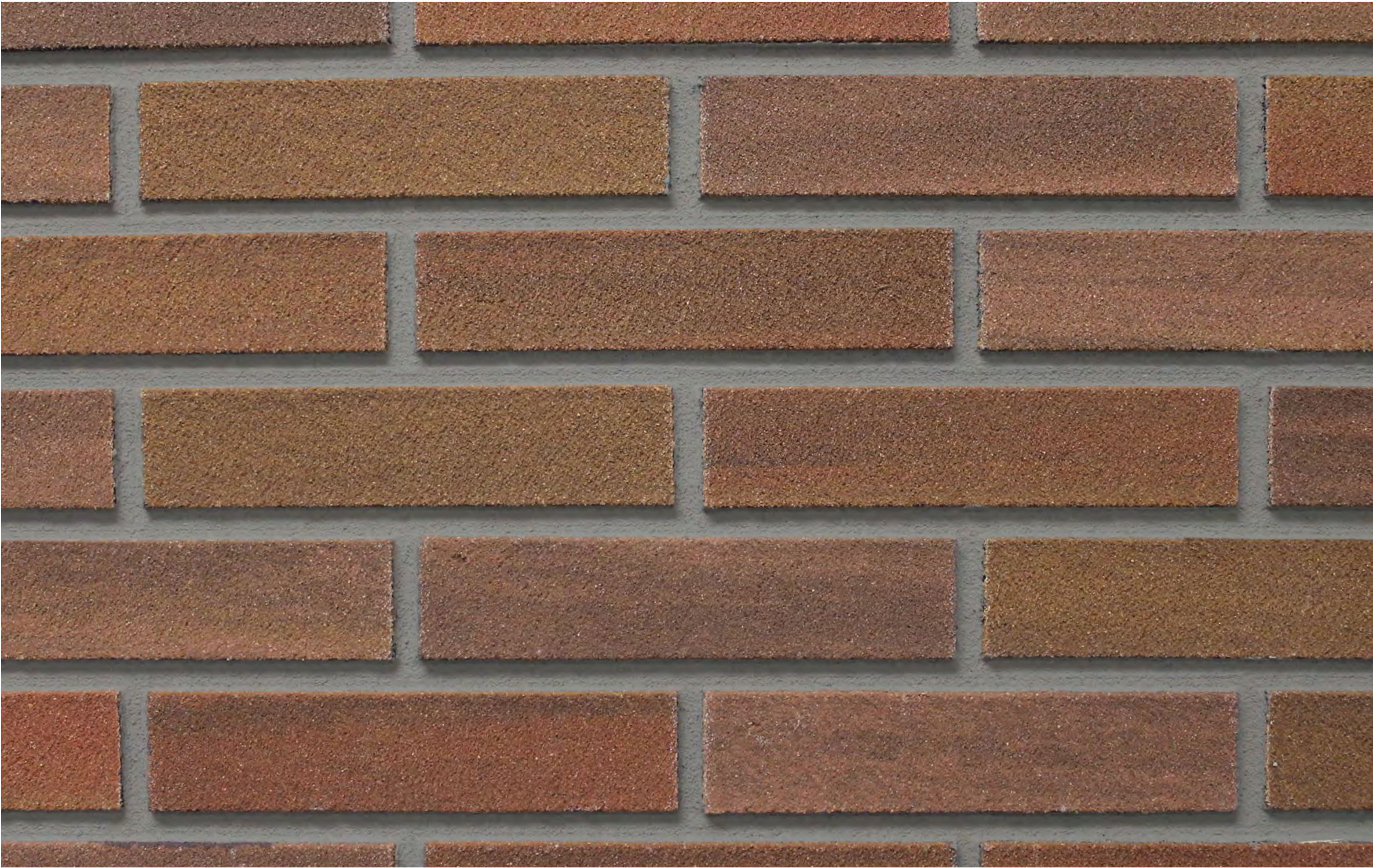
Please note that the details, illustrations, general technical information, and drawings contained in this guide are only general proposals and details which merely describe the basic functions schematically. They are not dimensionally accurate. Applicator/customer is independently responsible for determining the suitability and completeness for the product in question. Adjacent works are described only schematically. All specifications and information must be adjusted or agreed in the light of local conditions and do not constitute work, detail or installation plans. The specific technical specifications and information on the products contained in the Product Bulletins and details and specifications must be observed.

Savannah S9.7341

Light Reflective Value [LRV]:
15

Brick Corner:
Sharp

Mortar Joint color:
Grey 2060



Please note that the details, illustrations, general technical information, and drawings contained in this guide are only general proposals and details which merely describe the basic functions schematically. They are not dimensionally accurate. Applicator/customer is independently responsible for determining the suitability and completeness for the product in question. Adjacent works are described only schematically. All specifications and information must be adjusted or agreed in the light of local conditions and do not constitute work, detail or installation plans. The specific technical specifications and information on the products contained in the Product Bulletins and details and specifications must be observed.

St. Louis S9.5287

Light Reflective Value [LRV]:
13

Brick Corner:
Rounded

Mortar Joint color:
Cement Grey 2058



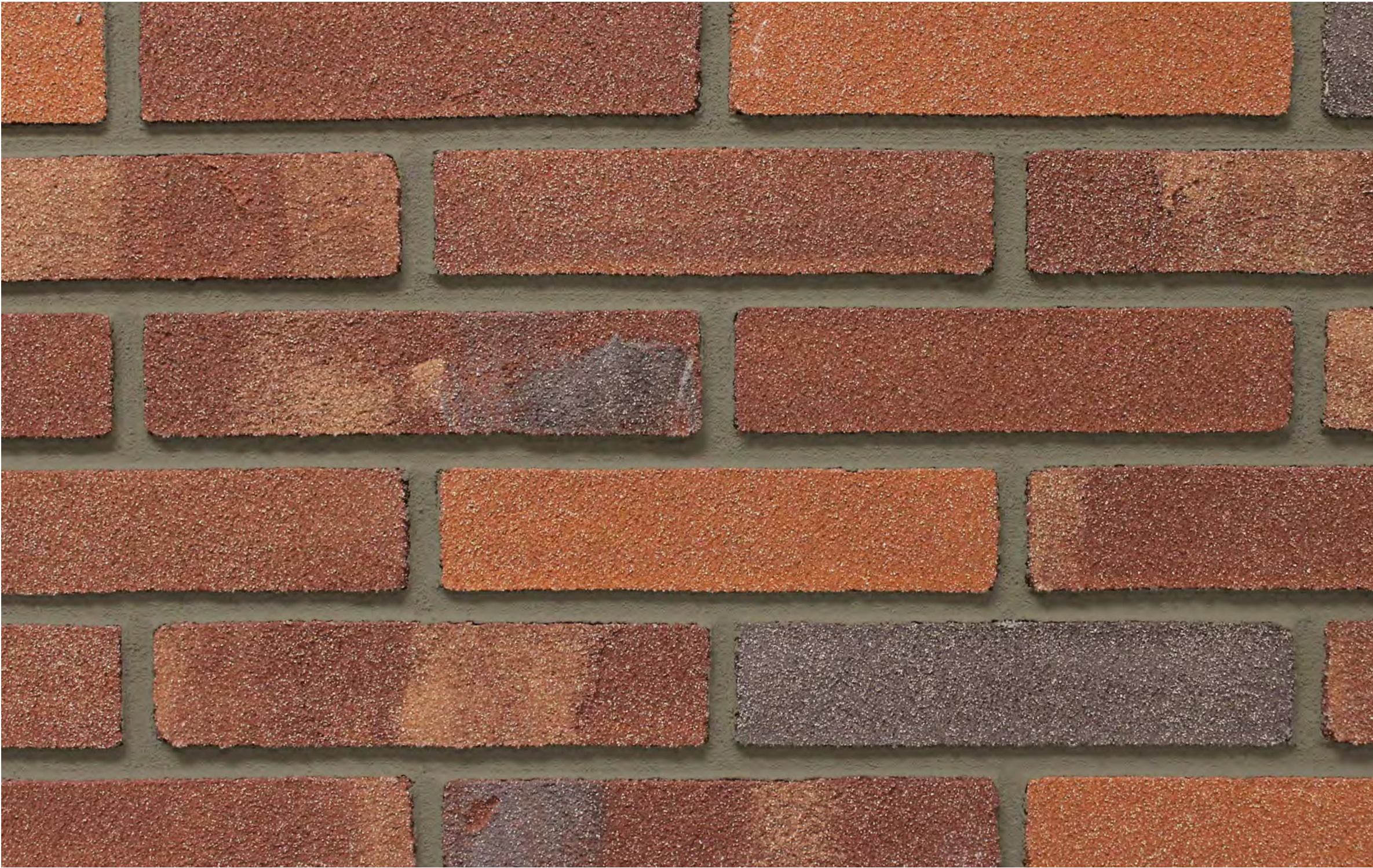
Please note that the details, illustrations, general technical information, and drawings contained in this guide are only general proposals and details which merely describe the basic functions schematically. They are not dimensionally accurate. Applicator/customer is independently responsible for determining the suitability and completeness for the product in question. Adjacent works are described only schematically. All specifications and information must be adjusted or agreed in the light of local conditions and do not constitute work, detail or installation plans. The specific technical specifications and information on the products contained in the Product Bulletins and details and specifications must be observed.

Toulouse S9.6689

Light Reflective Value [LRV]:
10

Brick Corner:
Rounded

Mortar Joint color:
Cement Grey 2058



Please note that the details, illustrations, general technical information, and drawings contained in this guide are only general proposals and details which merely describe the basic functions schematically. They are not dimensionally accurate. Applicator/customer is independently responsible for determining the suitability and completeness for the product in question. Adjacent works are described only schematically. All specifications and information must be adjusted or agreed in the light of local conditions and do not constitute work, detail or installation plans. The specific technical specifications and information on the products contained in the Product Bulletins and details and specifications must be observed.

Wexford S9.4865

Light Reflective Value [LRV]:
13

Brick Corner:
Rounded

Mortar Joint color:
Grey 2060



Please note that the details, illustrations, general technical information, and drawings contained in this guide are only general proposals and details which merely describe the basic functions schematically. They are not dimensionally accurate. Applicator/customer is independently responsible for determining the suitability and completeness for the product in question. Adjacent works are described only schematically. All specifications and information must be adjusted or agreed in the light of local conditions and do not constitute work, detail or installation plans. The specific technical specifications and information on the products contained in the Product Bulletins and details and specifications must be observed.

Light Texture

Sanded, finely textured brick



Harrison S9.6897



Lexington - S9.6683



Madison S9.4435

Harrison S9.6897

Light Reflective Value [LRV]:
11

Brick Corner:
Rounded

Mortar joint color:
Cement Grey 2058



Please note that the details, illustrations, general technical information, and drawings contained in this guide are only general proposals and details which merely describe the basic functions schematically. They are not dimensionally accurate. Applicator/customer is independently responsible for determining the suitability and completeness for the product in question. Adjacent works are described only schematically. All specifications and information must be adjusted or agreed in the light of local conditions and do not constitute work, detail or installation plans. The specific technical specifications and information on the products contained in the Product Bulletins and details and specifications must be observed.

Lexington S9.6683

Light Reflective Value [LRV]:
30

Brick Corner:
Sharp

Mortar Joint color:
Light Grey 2059



Please note that the details, illustrations, general technical information, and drawings contained in this guide are only general proposals and details which merely describe the basic functions schematically. They are not dimensionally accurate. Applicator/customer is independently responsible for determining the suitability and completeness for the product in question. Adjacent works are described only schematically. All specifications and information must be adjusted or agreed in the light of local conditions and do not constitute work, detail or installation plans. The specific technical specifications and information on the products contained in the Product Bulletins and details and specifications must be observed.

Madison S9.4435

Light Reflective Value [LRV]:
33

Brick Corner:
Rounded

Mortar Joint color:
Grey 2060



Please note that the details, illustrations, general technical information, and drawings contained in this guide are only general proposals and details which merely describe the basic functions schematically. They are not dimensionally accurate. Applicator/customer is independently responsible for determining the suitability and completeness for the product in question. Adjacent works are described only schematically. All specifications and information must be adjusted or agreed in the light of local conditions and do not constitute work, detail or installation plans. The specific technical specifications and information on the products contained in the Product Bulletins and details and specifications must be observed.



Tumbled

Distressed, aged and irregular in shape



Hamilton S9.6855

Hamilton S9.6855

Light Reflective Value [LRV]:
18

Brick Corner:
Rounded

Mortar joint color:
Sand yellow 2062



Please note that the details, illustrations, general technical information, and drawings contained in this guide are only general proposals and details which merely describe the basic functions schematically. They are not dimensionally accurate. Applicator/customer is independently responsible for determining the suitability and completeness for the product in question. Adjacent works are described only schematically. All specifications and information must be adjusted or agreed in the light of local conditions and do not constitute work, detail or installation plans. The specific technical specifications and information on the products contained in the Product Bulletins and details and specifications must be observed.



Vertical/Blade Cut

Extruded texture



Lubeck S9.6118



Sunderland S9.4475

Lubeck S9.6118

Light Reflective Value [LRV]:
17

Brick Corner:
Rounded

Mortar joint color:
Cement Grey 2058



Please note that the details, illustrations, general technical information, and drawings contained in this guide are only general proposals and details which merely describe the basic functions schematically. They are not dimensionally accurate. Applicator/customer is independently responsible for determining the suitability and completeness for the product in question. Adjacent works are described only schematically. All specifications and information must be adjusted or agreed in the light of local conditions and do not constitute work, detail or installation plans. The specific technical specifications and information on the products contained in the Product Bulletins and details and specifications must be observed.

Sunderland S9.4475

Light Reflective Value [LRV]:
15

Brick Corner:
Rounded

Mortar joint color:
Brown Grey 2063



Please note that the details, illustrations, general technical information, and drawings contained in this guide are only general proposals and details which merely describe the basic functions schematically. They are not dimensionally accurate. Applicator/customer is independently responsible for determining the suitability and completeness for the product in question. Adjacent works are described only schematically. All specifications and information must be adjusted or agreed in the light of local conditions and do not constitute work, detail or installation plans. The specific technical specifications and information on the products contained in the Product Bulletins and details and specifications must be observed.



Rolled

Wavy textured brick



Brandenburg S9.7094



Portmarnock S9.6761

Branderburg S9.7094

Light Reflective Value [LRV]:
16

Brick Corner:
Rounded

Mortar Joint color:
Brown Grey 2063



Please note that the details, illustrations, general technical information, and drawings contained in this guide are only general proposals and details which merely describe the basic functions schematically. They are not dimensionally accurate. Applicator/customer is independently responsible for determining the suitability and completeness for the product in question. Adjacent works are described only schematically. All specifications and information must be adjusted or agreed in the light of local conditions and do not constitute work, detail or installation plans. The specific technical specifications and information on the products contained in the Product Bulletins and details and specifications must be observed.

Portmarnock S9.6761

Light Reflective Value [LRV]:
20

Brick Corner:
Rounded

Mortar joint color:
Brown Grey 2063



Please note that the details, illustrations, general technical information, and drawings contained in this guide are only general proposals and details which merely describe the basic functions schematically. They are not dimensionally accurate. Applicator/customer is independently responsible for determining the suitability and completeness for the product in question. Adjacent works are described only schematically. All specifications and information must be adjusted or agreed in the light of local conditions and do not constitute work, detail or installation plans. The specific technical specifications and information on the products contained in the Product Bulletins and details and specifications must be observed.



Heavy Texture

Hard, rough texture



Arlington S9.3900



Bainbridge S9.5083



Cambridge S9.3488



Davenport S9.3812



Kensington S9.5627



Newberry S9.4988



Westend S9.6527



Winston S9.5575

Arlington S9.3900

Light Reflective Value [LRV]:
13

Brick Corner:
Rounded

Mortar Joint color:
Cement Grey 2058



Please note that the details, illustrations, general technical information, and drawings contained in this guide are only general proposals and details which merely describe the basic functions schematically. They are not dimensionally accurate. Applicator/customer is independently responsible for determining the suitability and completeness for the product in question. Adjacent works are described only schematically. All specifications and information must be adjusted or agreed in the light of local conditions and do not constitute work, detail or installation plans. The specific technical specifications and information on the products contained in the Product Bulletins and details and specifications must be observed.

Bainbridge S9.5083

Light Reflective Value [LRV]:
11

Brick Corner:
Rounded

Mortar Joint color:
Grey 2060



Please note that the details, illustrations, general technical information, and drawings contained in this guide are only general proposals and details which merely describe the basic functions schematically. They are not dimensionally accurate. Applicator/customer is independently responsible for determining the suitability and completeness for the product in question. Adjacent works are described only schematically. All specifications and information must be adjusted or agreed in the light of local conditions and do not constitute work, detail or installation plans. The specific technical specifications and information on the products contained in the Product Bulletins and details and specifications must be observed.

Cambridge S9.3488

Light Reflective Value [LRV]:
11

Brick Corner:
Rounded

Mortar Joint color:
Grey 2060



Please note that the details, illustrations, general technical information, and drawings contained in this guide are only general proposals and details which merely describe the basic functions schematically. They are not dimensionally accurate. Applicator/customer is independently responsible for determining the suitability and completeness for the product in question. Adjacent works are described only schematically. All specifications and information must be adjusted or agreed in the light of local conditions and do not constitute work, detail or installation plans. The specific technical specifications and information on the products contained in the Product Bulletins and details and specifications must be observed.

Davenport S9.3812

Light Reflective Value [LRV]:
65

Brick Corner:
Rounded

Mortar Joint color:
Sand Yellow 2062



Please note that the details, illustrations, general technical information, and drawings contained in this guide are only general proposals and details which merely describe the basic functions schematically. They are not dimensionally accurate. Applicator/customer is independently responsible for determining the suitability and completeness for the product in question. Adjacent works are described only schematically. All specifications and information must be adjusted or agreed in the light of local conditions and do not constitute work, detail or installation plans. The specific technical specifications and information on the products contained in the Product Bulletins and details and specifications must be observed.

Kensington S9.5627

Light Reflective Value [LRV]:
35

Brick Corner:
Rounded

Mortar joint color:
Cement Grey 2058



Please note that the details, illustrations, general technical information, and drawings contained in this guide are only general proposals and details which merely describe the basic functions schematically. They are not dimensionally accurate. Applicator/customer is independently responsible for determining the suitability and completeness for the product in question. Adjacent works are described only schematically. All specifications and information must be adjusted or agreed in the light of local conditions and do not constitute work, detail or installation plans. The specific technical specifications and information on the products contained in the Product Bulletins and details and specifications must be observed.

Newberry S9.4988

Light Reflective Value [LRV]:
13

Brick Corner:
Rounded

Mortar Joint color:
Light Grey 2059



Please note that the details, illustrations, general technical information, and drawings contained in this guide are only general proposals and details which merely describe the basic functions schematically. They are not dimensionally accurate. Applicator/customer is independently responsible for determining the suitability and completeness for the product in question. Adjacent works are described only schematically. All specifications and information must be adjusted or agreed in the light of local conditions and do not constitute work, detail or installation plans. The specific technical specifications and information on the products contained in the Product Bulletins and details and specifications must be observed.

Westend S9.6527

Light Reflective Value [LRV]:
44

Brick Corner:
Rounded

Mortar joint color:
Sand Yellow 2062



Please note that the details, illustrations, general technical information, and drawings contained in this guide are only general proposals and details which merely describe the basic functions schematically. They are not dimensionally accurate. Applicator/customer is independently responsible for determining the suitability and completeness for the product in question. Adjacent works are described only schematically. All specifications and information must be adjusted or agreed in the light of local conditions and do not constitute work, detail or installation plans. The specific technical specifications and information on the products contained in the Product Bulletins and details and specifications must be observed.

Winston S9.5575

Light Reflective Value [LRV]:
14

Brick Corner:
Rounded

Mortar Joint color:
Brown Grey 2063



Please note that the details, illustrations, general technical information, and drawings contained in this guide are only general proposals and details which merely describe the basic functions schematically. They are not dimensionally accurate. Applicator/customer is independently responsible for determining the suitability and completeness for the product in question. Adjacent works are described only schematically. All specifications and information must be adjusted or agreed in the light of local conditions and do not constitute work, detail or installation plans. The specific technical specifications and information on the products contained in the Product Bulletins and details and specifications must be observed.

Sto Bonding & Pointing Mortar

A 100% acrylic-based mortar that greatly reduces the risk of efflorescence. Used to adhere StoCast Brick and grout the joints.

Standard Colors

- 1. White 2056
- 2. Light Grey 2059
- 3. Cement Grey 2058
- 4. Grey 2060
- 5. Graphite 2061
- 6. Anthracite 2057
- 7. Brown 2064
- 8. Brown Grey 2063
- 9. Sand Yellow 2062

Custom colors upon request



White 2056



Light Grey 2059



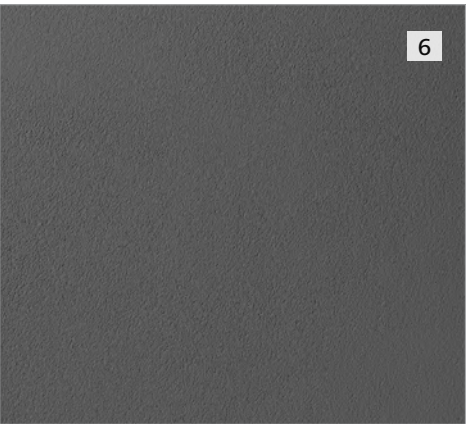
Cement Grey 2058



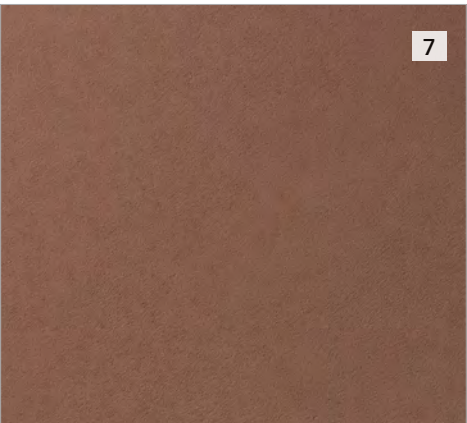
Grey 2060



Graphite 2061



Anthracite 2057



Brown 2064

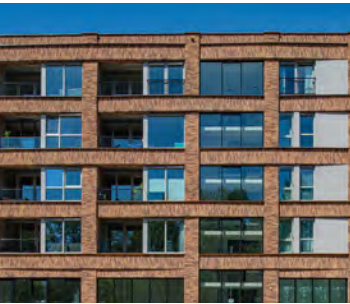


Brown Grey 2063



Sand Yellow 2062

Project References



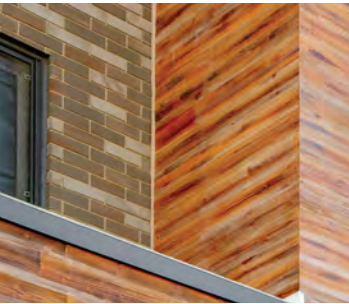
MyLoft World Fashion Center, Amsterdam, NL



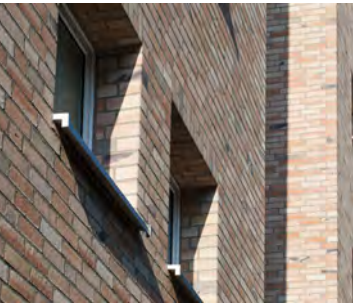
Reykjavikplein, Utrecht, NL



B-Line, Toronto, ON



Wiebelstraße/Drieschweg, Hamburg, DE



Soltauer Straße, Lüneburg, DE



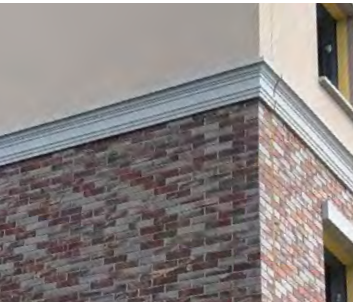
Kielort 16-18, Norderstedt, DE



Groene Linten, Haarlem, NL



Church St., St. Catherine's, ON



109 King St., Newcastle, ON



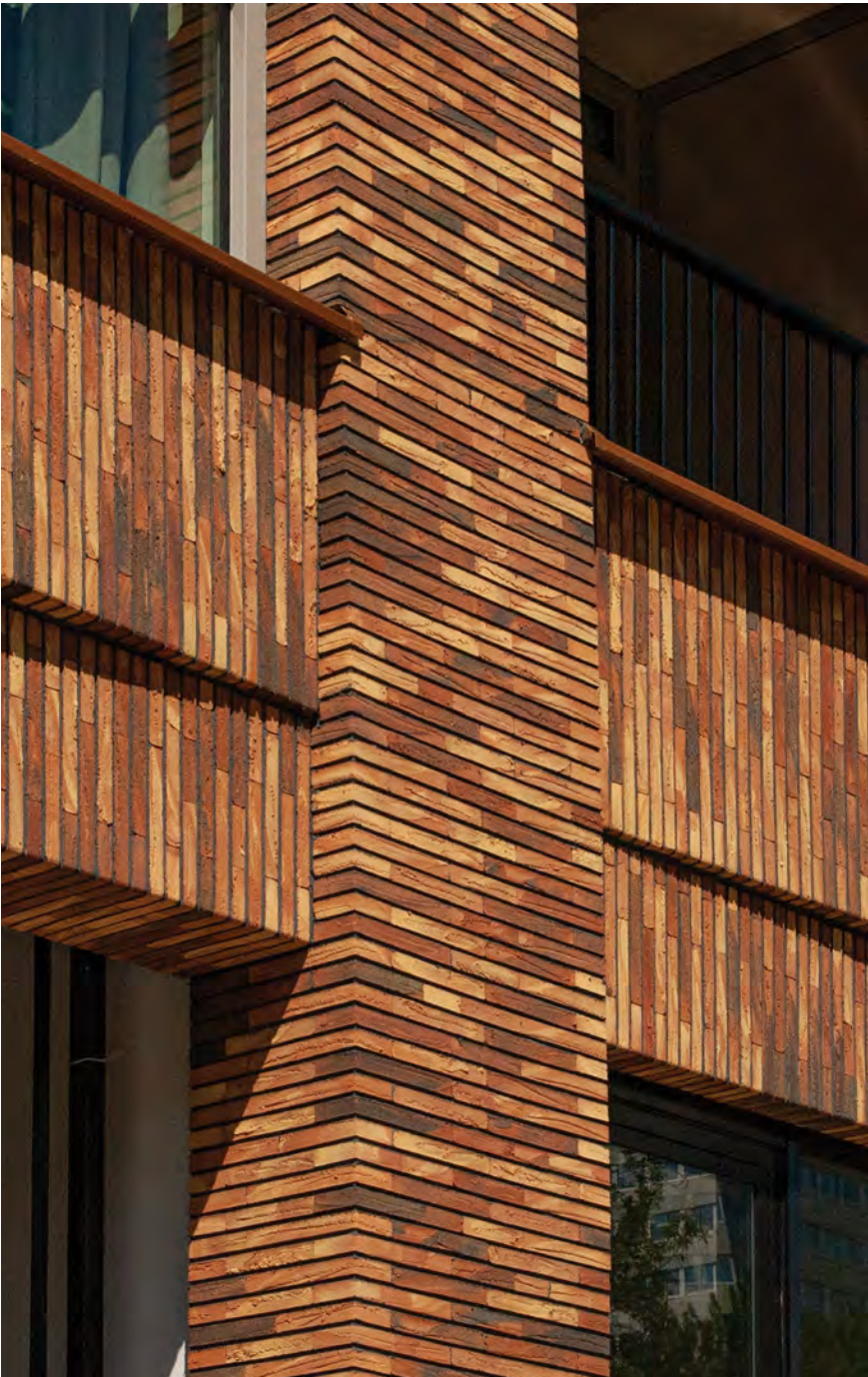
University Heights, Toronto, ON



MyLoft World Fashion Center Amsterdam, NL

Owner: CPO MyLoft WFC, Amsterdam, NL
Architect: Architektenburo Brink & Fler, Dronten, NL
Contractor: Haase Bouw, Rijssen, NL
Brick model: S9.6550

Photography: Sto Isoned bv, Norbert Duijvelshoff, Tiel, NL



Reykjavikplein Utrecht, NL

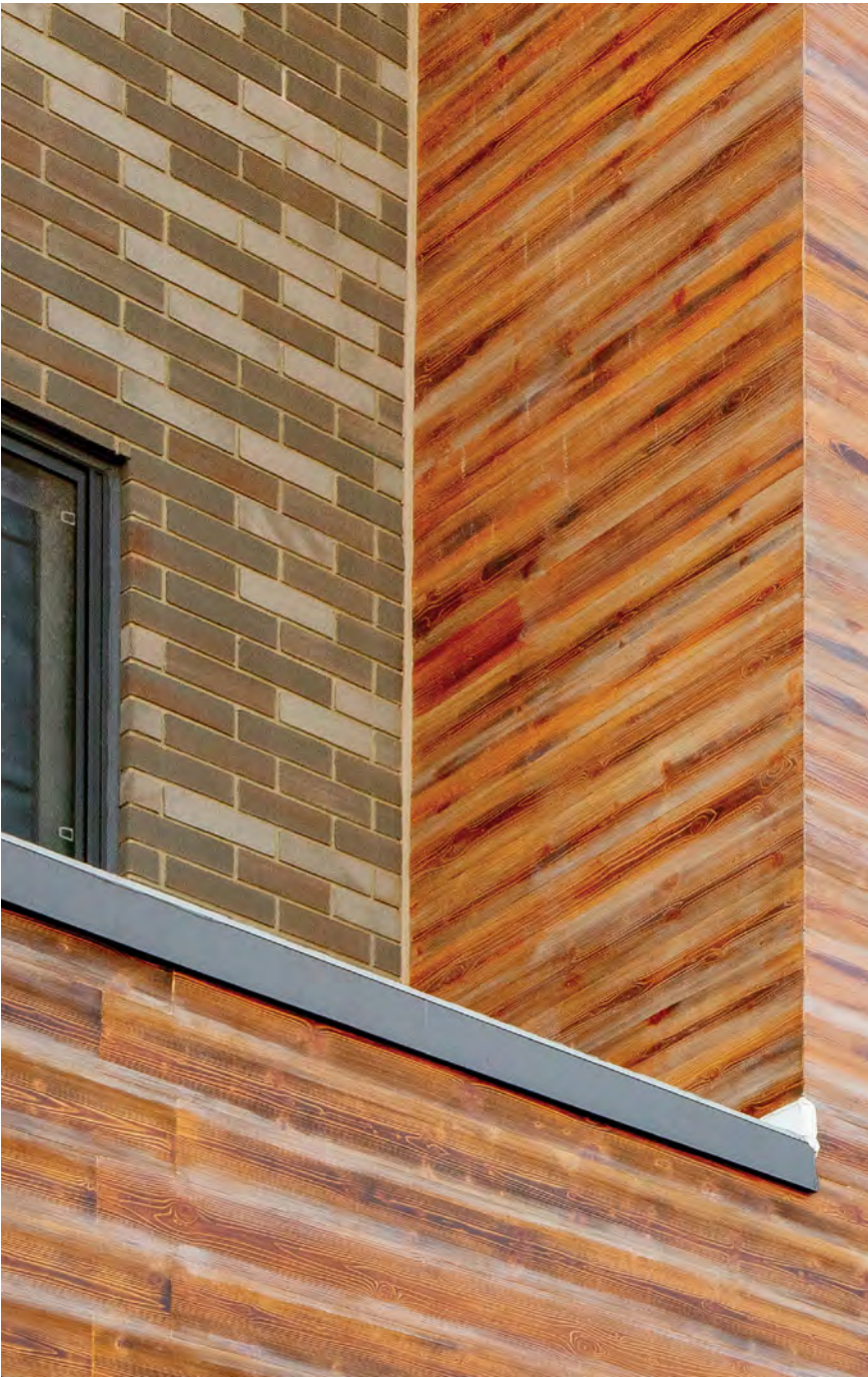
Owner: Stichting Pensioenfonds van Metalektro,
Den Haag, NL
Architect: diederendirrix B. V., Eindhoven, NL
Contractor: De Vries en Verburg Bouw B.V., Stolwijk, NL
Brick Model: S9.7094

Photography: Ronald Tilleman Photography, Rotterdam, NL



B-Line
Toronto, ON

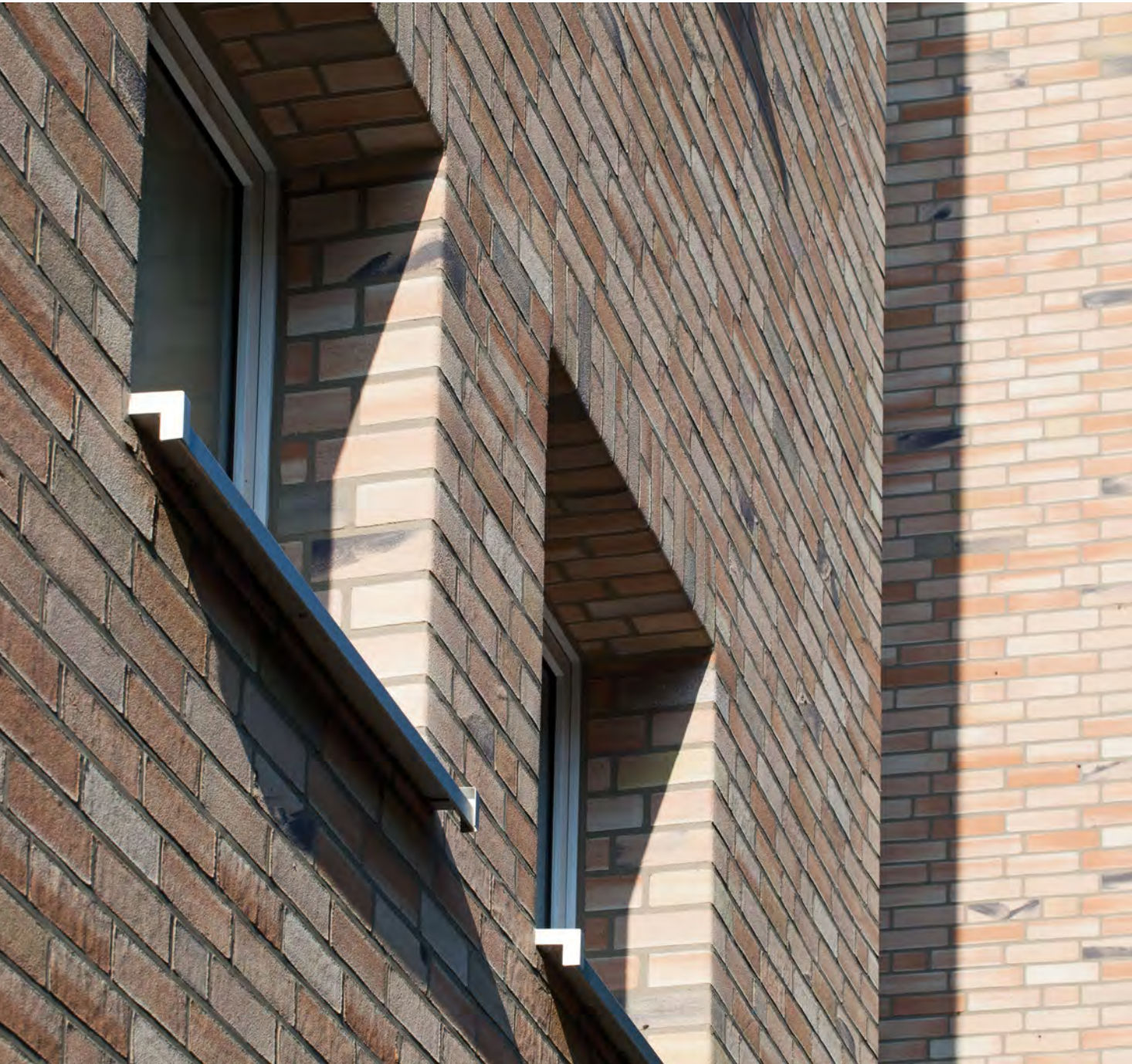
Architect: Romanov Romanov Architects inc.
Developer: Royalpark Homes
Contractor: Skyrise Prefab
Wall Panel Engineer: Skyrise Prefab
Brick Model: S9.9197



Wiebelstraße / Drieschweg Hamburg, DE

Owner: BVE Bauverein der Elbgemeinden eG, Hamburg, DE
Architect: Henninger Architekt, Gesellschaft von Architekten und Ingenieuren mbH, Hamburg, DE
Contractor: Preusse Baubetriebe GmbH, Hamburg, DE
Brick Model: S9.3583

Photography: Fotodesign Christoph Gebler, Hamburg, DE



Soltauer Straße Lüneburg, DE

Owner: Wohnungsgenossenschaft Lüneburg e.G,
Lüneburg, DE
Architect: Henninger Architekt, Gesellschaft von Architekten
und Ingenieuren mbH, Hamburg, DE
Contractor: Ernst Martin Knief GmbH & Co KG, Winsen, DE
Brick Model: S9.1053 (request texture)

Photography: Fotodesign Christoph Gebler, Hamburg, DE



Kielort 16-18

Norderstedt, DE

Owner: Bauverein der Elbgemeinden eG, Hamburg, DE
Architect: ABJ.Planungsgesellschaft mbH, Hamburg, DE
Contractor: Hans-Jürgen Rath GmbH, Hohenaspe, DE
Brick Model: S9.0627

Photography Fotodesign Christoph Gebler, Hamburg, DE



Groene Linten Haarlem, NL

Owner: Pré Wonen, Velsbroek, NL
Architect:: Klous + Brandjes Architecten bna, Haarlem, NL
Contractor: VBK Noord-West B.V., Schagen, NL
Brick model: S9.5225

Photography: Ronald Tilleman Photography, Rotterdam, NL



Church St.
St. Catherine’s, ON

Owner: Pennterra Group
Architect: NewGround Canada
Contractor: Solid General Contractors Inc.
Wall Panel Engineer: Skyrise Prefab
Brick Model: : S9.5083 & S9.5032





109 King St.
Newcastle, ON

Owner: Gyaltsan Properties
Architect: Nick Swerdfeger Architects
Contractor: Wilkinson Construction Services Inc.
Wall Panel Engineer: Skyrise Prefab
Brick Model: S9.6761



University Heights Toronto, ON

Owner: Haven Developments
Architect: ACK Architects Inc.
Construction Manager: Gillam Group
Wall Panel Engineer: Skyrise Prefab
Brick Model: S9.4797





The only limit is your imagination

With Sto, your creative exploration can take you anywhere. Our proven products give you unmatched freedom and the ability to achieve your vision in any color, any form, any texture, any material.

StoCast Brick joins a wide range of aesthetics options provided by Sto. Designers are asking for design freedom, but with the assurance that the entire building envelope will perform. With this new outstanding offer, architects can now add brick while enjoying the continuity and compatibility of the wall cladding throughout the entire building, no matter the aesthetic chosen.

Creativity Begins. **Sto Finishes.**®



Sto Americas

Sto Corp.
3800 Camp Creek Pkwy
Building 1400, Suite 120
Atlanta, GA 30331
USA

Phone 1-800-221-2397
www.stocorp.com

ATTENTION

Sto products are intended for use by qualified professional contractors, not consumers, as a component of a larger construction assembly as specified by a qualified design professional, general contractor or builder. They should be installed in accordance with those specifications and Sto's instructions. Sto Corp. disclaims all, and assumes no, liability for on-site inspections, for its products applied improperly, or by unqualified persons or entities, or as part of an improperly designed or constructed building, for the nonperformance of adjacent building components or assemblies, or for other construction activities beyond Sto's control. Improper use of Sto products or use as part of an improperly designed or constructed larger assembly or building may result in serious damage to this product, and to the structure of the building or its components. **STO CORP. DISCLAIMS ALL WARRANTIES EXPRESSED OR IMPLIED EXCEPT FOR EXPLICIT LIMITED WRITTEN WARRANTIES ISSUED TO AND ACCEPTED BY BUILDING OWNERS IN ACCORDANCE WITH STO'S WARRANTY PROGRAMS WHICH ARE SUBJECT TO CHANGE FROM TIME TO TIME.** For the fullest, most current information on proper application, clean-up, mixing and other specifications and warranties, cautions and disclaimers, please refer to the Sto Corp. website, www.stocorp.com.